

DATA SHEET

STEM CELL ASSAYS

CONTENTS

1. Microfluidic cartridge with lyse or non-lyse buffer
2. Dried reagents in tube

STORAGE

Dry cool place protected from light

DESCRIPTION

MARKER	FLUOROPHORE	CLONE
CD45	PE/Cyanine7	HI30
CD34	PE	581
CD3 (optional)	PE/Cyanine5	UCHT1
Viability dye	DiYO-3	N/A
Count beads	N/A	N/A

The Accellix Platform automates your entire GMP cell phenotyping process from sample preparation to data acquisition and analysis, to generate rapid results directly in the manufacturing suite. Central to our enabling technology are standard and custom assays. These assays enable sample preparation in a stable, single-use microfluidic cartridge using unitized and dried reagents that are stable at ambient temperatures. The dried reagent also has control beads, enabling cell counting and in-run QC for every assay. Each assay incorporates an Accellix cartridge with a unique QR code, simplifying the workflow and reducing the chances for human error.

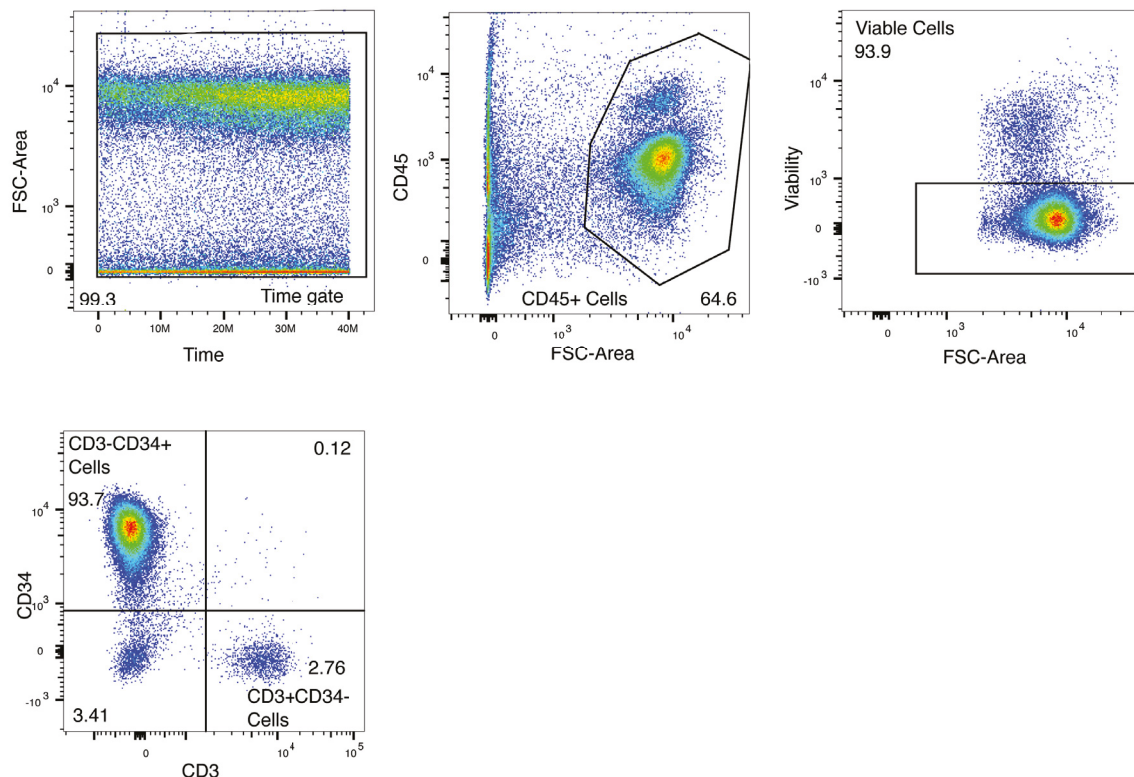
INTENDED USE

The Stem Cell assays are used for the enumeration (frequencies and counts) of hematopoietic stem cells (HSCs) by measuring viable CD45+ leukocytes, CD34+ HSCs, and CD3+ T cells (optional). The Stem Cell assays do not include CD3 antibodies, while the Stem Cell-3 assays include CD3 antibody conjugated to PECy5. The lyse (L) assays may be used for staining apheresis, whole blood, and other samples that require differential RBC (red blood cells) lysis, while the non-lyse version may be used for staining purified stem cells. Stem Cell N-I test kits contain only CD45 and CD34 antibodies, while Stem Cell-3 N-I test kits contain CD45, CD34 and CD3 antibodies, enabling customers to add AF488 conjugated liquid antibodies to test on the Accellix Platform. The assays have been formulated to process samples with cell concentrations ranging between 1-50 million cells/mL. A detailed protocol on how to run the Accellix assays can be found in the Accellix Assay Kit Instructions for Use.

KEY BENEFITS

- + Each assay incorporates an Accellix cartridge with a unique QR code, simplifying the workflow and reducing the chances for human error.
- + Unitized, dried-down reagents are stable at ambient temperature, and increase repeatability and accuracy.
- + Each assay contains a viability dye and count beads, obviating the need for separate viable cell counting and providing in-run QC.

DATA SHEET



Purified hematopoietic stem cells were stained with Stem Cell-3 RTF Assay (NL)

CATALOG NUMBER	ASSAY NAME	DESCRIPTION	CONTENTS
A1004-1L	Stem Cell RTF Assay (L)	Basic Stem Cell panel with lysis buffer for apheresis or samples requiring RBC lysis	CD45-PECy7, CD34-PE, DiYO-3 Viability, Control Beads
A1004-1NL	Stem Cell RTF Assay (NL)	Basic Stem Cell panel with non-lyse buffer for purified cells or drug product	CD45-PECy7, CD34-PE, DiYO-3 Viability, Control Beads
A1004-2L	Stem Cell N-1 AF488 RTF Test Kit (L)	Basic Stem Cell panel with lysis buffer for apheresis or samples requiring RBC lysis; user adds liquid AF488 conjugate antibody	CD45-PECy7, CD34-PE, DiYO-3 Viability, Control Beads (Liquid AF488 conjugate added by user)
A1004-2NL	Stem Cell N-1 AF488 RTF Test Kit (NL)	Basic Stem Cell panel with non-lyse buffer for purified cells or drug product; user adds liquid AF488 conjugate antibody	CD45-PECy7, CD34-PE, DiYO-3 Viability, Control Beads (Liquid AF488 conjugate added by user)
A1005-1L	Stem Cell-3 RTF Assay (L)	Expanded Stem Cell panel with CD3 antibody and lysis buffer for apheresis or samples requiring RBC lysis	CD45-PECy7, CD3-PECy5, CD34-PE, DiYO-3 Viability, Control Beads
A1005-1NL	Stem Cell-3 RTF Assay (NL)	Expanded Stem Cell panel with CD3 antibody and non-lyse buffer for purified cells or drug product	CD45-PECy7, CD3-PECy5, CD34-PE, DiYO-3 Viability, Control Beads
A1005-2L	Stem Cell-3 N-1 AF488 RTF Test Kit (L)	Expanded Stem Cell panel with CD3 antibody and lysis buffer for apheresis or samples requiring RBC lysis; user adds liquid AF488 conjugate antibody	CD45-PECy7, CD3-PECy5, CD34-PE, DiYO-3 Viability, Control Beads (liquid AF488 conjugate added by user)
A1005-2NL	Stem Cell-3 N-1 AF488 RTF Test Kit (NL)	Expanded Stem Cell panel with CD3 antibody and non-lyse buffer for purified cells or drug product; user adds liquid AF488 conjugate antibody	CD45-PECy7, CD3-PECy5, CD34-PE, DiYO-3 Viability, Control Beads (liquid AF488 conjugate added by user)