



## Technical Data Sheet

**Product Name** Stem Cell Reagent Tube Format (RTF) with Lysis Buffer (L) Assay

**Catalog#** A1004-1L

**Contents** 1. Microfluidic cartridge with lyse buffer

2. Dried reagents in tube

### Description

The Accellix Stem Cell assay is used for the enumeration (frequencies and absolute counts) of viable human hematopoietic progenitor cells, characterized by their levels of CD45, CD3, and CD34 expression. These are standard kits that can be run on multiple sample types, including those requiring differential red blood cell lysis, and have been formulated to process samples with cell concentrations ranging between 1-50 million cells per mL

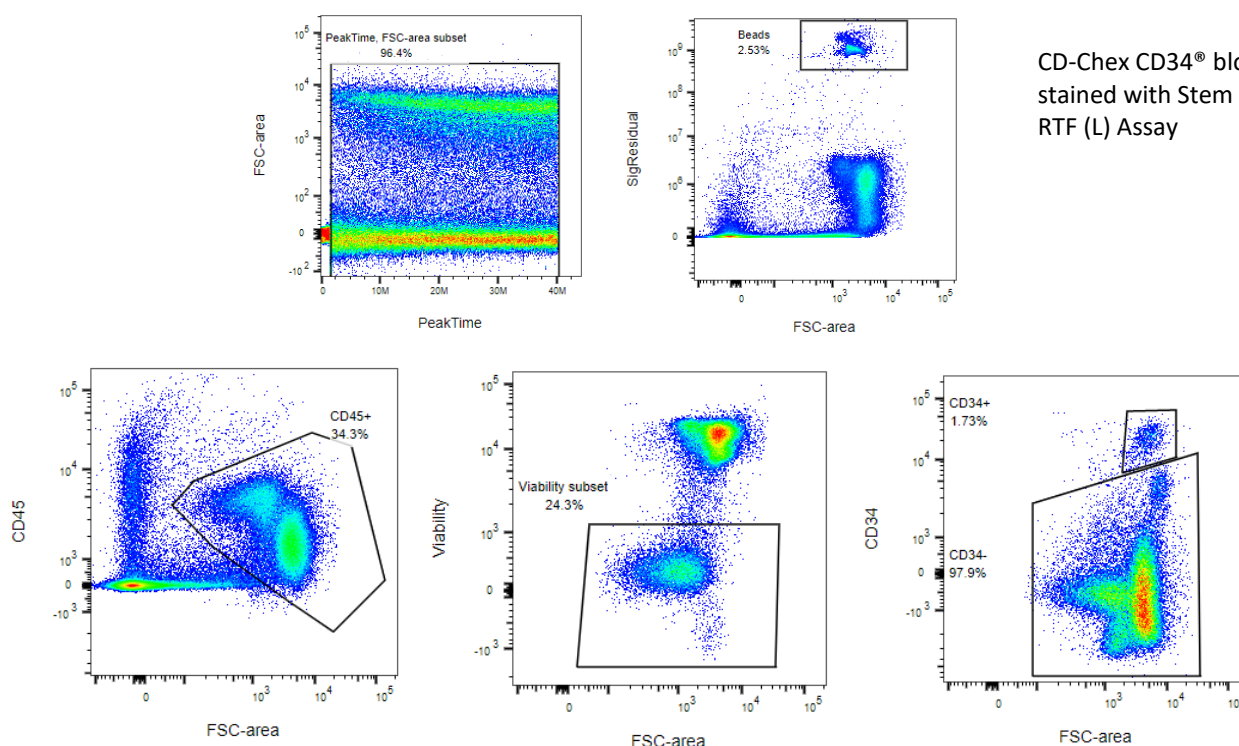
### Storage

Dry cool place protected from light

### Reagent Composition

Marker	Clone	Emission Peak (nm)
CD45	HI30	778
CD34	581	567
Viability dye	N/A	643
Control Beads	N/A	

### Product Data and Autoclassification Process



2385 Bering Dr. San Jose, CA 95131 • [support@accellix.com](mailto:support@accellix.com) • +1 650.396.3035

**Ordering:** [accounting@accellix.com](mailto:accounting@accellix.com)

**Technical inquiries:** [support@accellix.com](mailto:support@accellix.com)